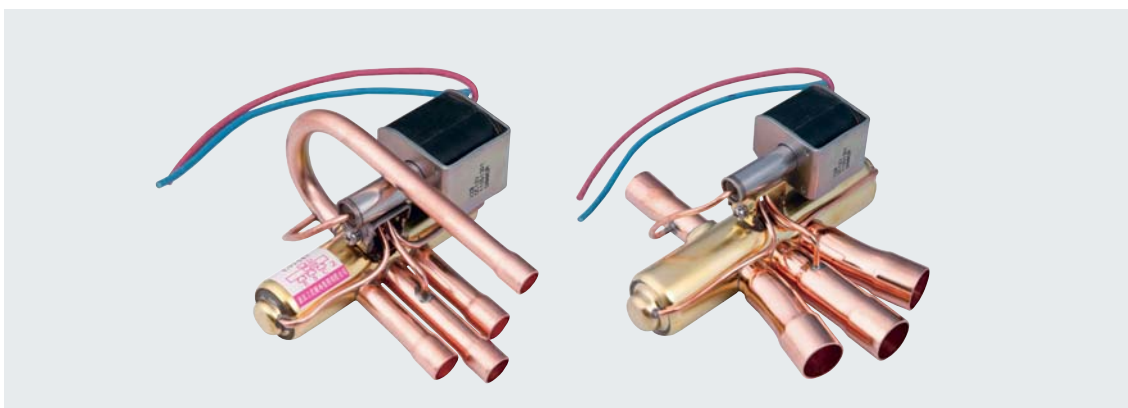


# Four-way Reversing Valve SHF(L) Series



## 简述



SHF (L) series four-way reversing valves are applicable for heat pump systems such as central, unitary and room air conditioners to realize switching between cooling mode and heating mode by changing the flow path of refrigerant.

## Features

- ◆ Power saving: nearly zero energy consumption with bi-stable coils
- ◆ Excellent anti-system abnormal recoil ability and operation performance: the pilot valve is specially designed and straight sleeve structure adopted
- ◆ Good anti-vibration performance: the pilot valve is fastened to the main valve by screws.

## General spec.

- ◆ Applicable refrigerant: R22, R407C, R410A etc.
- ◆ Applicable medium temperature: -30°C ~ +120°C
- ◆ Applicable ambient temperature: -30°C ~ +50°C
- ◆ Relative humidity: below 95% RH
- ◆ Certification: UL, VDE, CQC

## Technical Parameters

Series	Model	Port mm	R22 Nominal Capacity		Max. Working Pressure MPa	Operation Pressure Difference MPa		Connection Size (Outside Diameter) in	
			kW	US.R.T		Max	Min	D Tube	E/S/C Tube
SHF-3	SHF(L)-3/3K/3H-12U	7.4	3.5	1.0	3.0(R22) 3.3(R407C) 4.2(R410A)	2.25(R22、 R407C)	0.25	1/4	5/16
SHF-4	SHF(L)-4/4K/4H-23U	8.0	4.5	1.25				5/16	3/8
SHF-7	SHF(L)-7/7K/7H-34U	11.1	7	2.0				3/8	1/2
SHF-9	SHF(L)-9/9K/9H-35U	11.5	9	2.5		0.34	3/8	5/8	
SHF-11	SHF(L)-11/11K/11H-45D1	11.5	11	3.1			1/2	5/8	

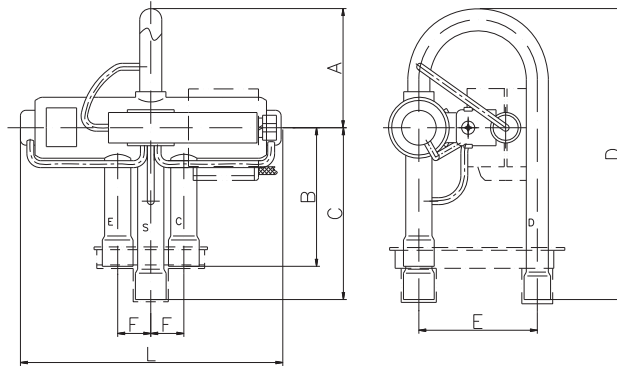
## Electrical Parameters of Coil

Type	Classification	Rated Voltage V	Frequency Hz	Power W
Coils with Lead Wires	SHF-4-10L Series	AC220~240, AC200, AC100, AC110~120, AC24, AC265~277	50/60	4.5/3.5
	SHF-4-10W Series	AC220, AC220~240, AC100	50/60	6/5
		AC200	50/60	7/5
		DC35	/	7
Coil with Spade Connection	SHF-4-10FA Series	AC220~240, AC220, AC115~120, AC100-110, AC24, AC265~277, AC200	50/60	6/5
		DC12	/	10
		DC24	/	11
Bistable Coils	XZB Series	AC100, AC200	50/60	18
		DC12	/	20

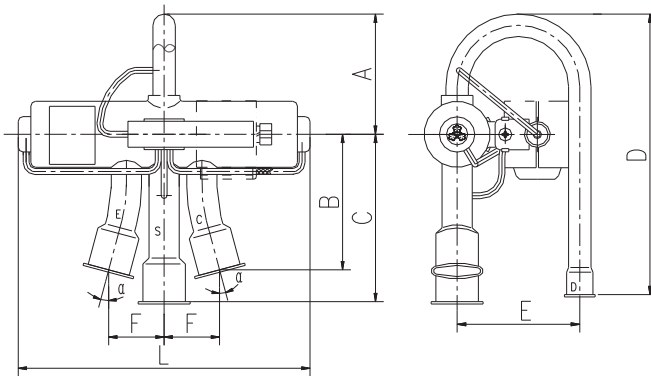
# Four-way Reversing Valve SHF(L) Series



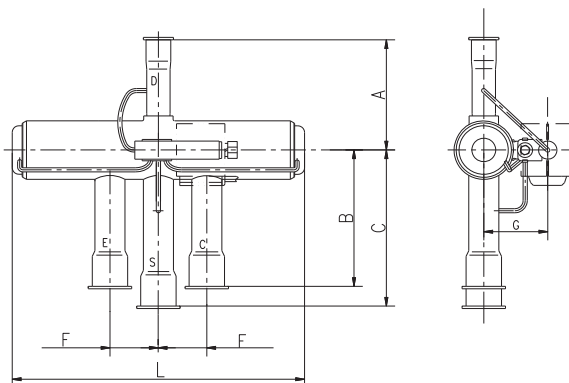
## Dimensions



Model	Dimensions mm							Connection Size/Connection Depth mm	
	L	A	B	C	D	E	F	D Tube	E/S/C Tube
SHF(L)-3/3K/3H-12U	88.2	38.5	38	50	88.5	43	11	6.5/7	8.1/8.5
SHF(L)-4/4K/4H-23U	94.4	43	50	62	105	43	12	8.1/8.5	9.65/9.5
SHF(L)-7/7K/7H-34U	113	51	59	71	119	52	16	9.65/9.5	12.8/9.5
SHF(L)-9/9K/9H-34U	115.5	51	59	71	119	52	16	9.65/9.5	12.8/9.5
SHF(L)-11/11K/11H-34U	117	51	59	71	119	52	16	9.65/9.5	12.8/9.5



Model	Dimensions (size unit: mm; angle unit: °)								Connection Size/Connection Depth mm	
	L	A	B	C	D	E	F	$\alpha$	D Tube	E/S/C Tube
SHF(L)-9/9K/9H-35U	115.5	51	57	72	119	52	23.5	15	9.65/9.5	16/16

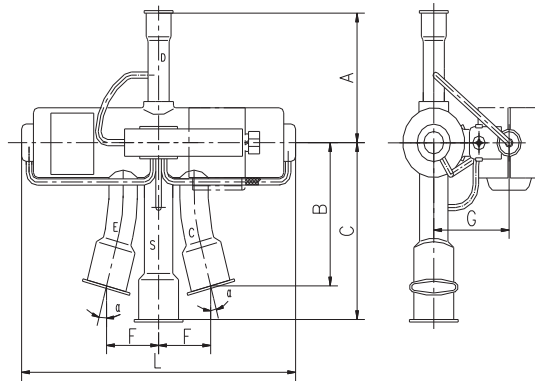


Model	Dimensions mm						Connection Size/Connection Depth mm	
	L	A	B	C	F	G	D Tube	E/S/C Tube
SHF(L)-4/4K/4H-23	94.4	50	50	62	12	31.5	8.1/8.5	9.65/9.5
SHF(L)-7/7K/7H-34	113	52	59	71	16	34	9.65/9.5	12.8/9.5

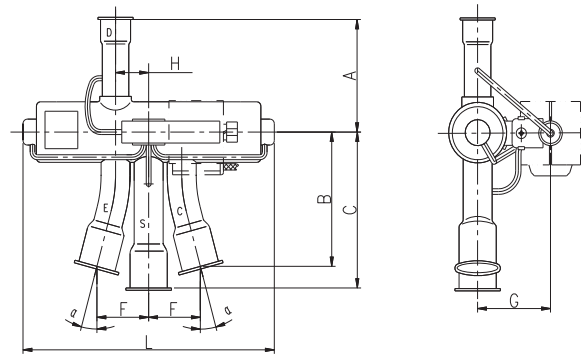
# Four-way Reversing Valve SHF(L) Series



## Dimensions



Model	Dimensions (size unit: mm; angle unit: °)								Connection Size/Connection Depth mm	
	L	A	B	C	F	G	$\alpha$	D Tube	E/S/C Tube	
SHF(L)-9/9K/9H-45	115.5	52	57	72	23.5	34	15	12.8/10	16/16	
SHF(L)-11/11K/11H-45	117	52	62	72	25	34	15	12.8/10	16/16	



Model	Dimensions (size unit: mm; angle unit: °)								Connection Size/Connection Depth mm	
	L	A	B	C	F	G	H	$\alpha$	D Tube	E/S/C Tube
SHF(L)-11/11K/11H-45D1	117	52	62	87	25	34	16	15	12.8/10	16/17
SHF(L)-11/11K/11H-36D1	117	49.5	82.5	87.5	32.5	34	16	20	9.65/13	19.2/19
SHF(L)-11/11K/11H-46D1	117	49.5	82.5	87.5	32.5	34	16	20	12.8/10	19.2/19