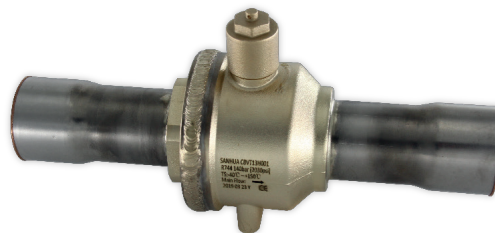




CBVT SERIES

BALL VALVE



The ball valve of series CBVT is applicable for commercial CO₂ refrigeration applications in order to open and to shut off inner flow path by operating the valve stem. The ball valve of CBVT is applicable for transcritical CO₂ refrigeration systems and is a perfect choice for all similar CO₂ systems.

FEATURES

- STRAIGHTWAY TYPE, FULL PORT, LOW PRESSURE DROP – HIGH EFFICIENCY
- VALVE BODY WITH WELDED STRUCTURE – PRODUCT STRENGTH AND RELIABILITY
- ROTATE 1/4 CIRCLES FROM FULL-OPEN TO FULL-CLOSE – EASY AND FAST TO OPERATE
- BIDIRECTIONAL FLOW¹⁾
- VERSION WITH BI-METAL CONNECTIONS – EASY AND FAST BRAZING FOR SYSTEMS WITH K65 PIPING
- VERSION WITH STAINLESS-STEEL BUTT-WELDING CONNECTIONS – SUITABLE FOR SYSTEMS WITH STAINLESS STEEL PIPING [COMING SOON]

Note: 1) CBVT valves fulfill internal tightness requirements of the standard EN12284, paragraph 9.6.3 in both flow directions.
Installations with shut off function to the atmosphere (just temporarily for service purpose): Please install the solder connection “B” at the airside. Please see solder connection “A” and “B” at the dimensional drawing page 3.
Remark: Welding body junction is always at solder connection “A”

GENERAL SPECIFICATIONS

- Applicable for R744 (CO₂)
- Medium temperature TS min./max.: -56°C / +150°C
- Max. operating pressure PS: 14 MPa (burst pressure: 42MPa)
- Installation position: liquid, suction and discharge line in all directions
- Certifications: PED declaration
- UL attestation



GENERAL CHARACTERISTICS

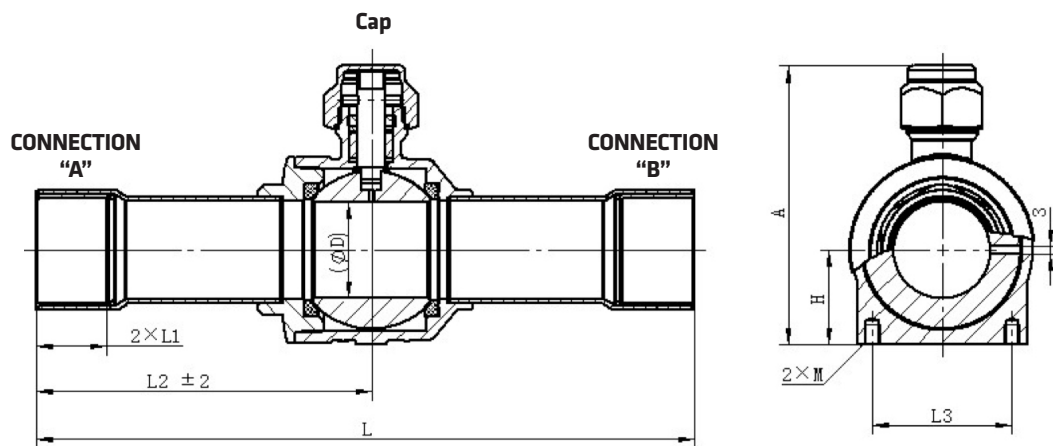
1) Models with Bi-Metal Connections

Model	Part Number	Connection Ø d ODF		Kv [m³/h]	Wrench Size Cap [mm]	PED Category
		[inch]	[mm]			
CBVT 02H002	10150108802	-	6	1,9	H24	4.3
CBVT 02H001	10150103102	1/4	-	1,9	H24	4.3
CBVT 03H001	10150099502	3/8	-	5,5	H24	4.3
CBVT 03H002	10150109102	-	10	5,5	H24	4.3
CBVT 04H002	10150108902	-	12	10,2	H24	4.3
CBVT 04H001	10150099202	1/2	-	10,2	H24	4.3
CBVT 05H002	10150109002	-	15	13,8	H24	4.3
CBVT 05H001	10150099302	5/8	16	13,8	H24	4.3
CBVT 06H002	10150109302	-	18	19,5	H27	4.3
CBVT 06H001	10150099102	3/4	-	19,5	H27	4.3
CBVT 07H001	10150099002	7/8	22	28,0	H27	4.3
CBVT 09H002	10150109202	-	28	34,9	H27	4.3
CBVT 09H001	10150098902	1-1/8	-	34,9	H27	4.3
CBVT 11H001	10150098502	1-3/8	35	80,0	H32	I
CBVT 13H001	10150098602	1-5/8	-	119,8	H32	I
CBVT 13H002	10150109402	-	42	119,8	H32	I



DIMENSIONS

1) Models with Bi-Metal Connections

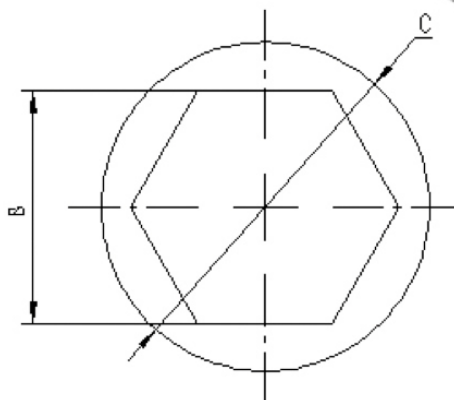
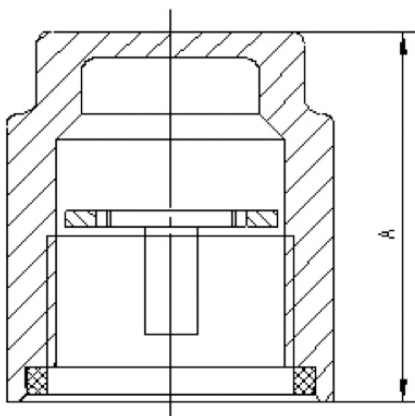
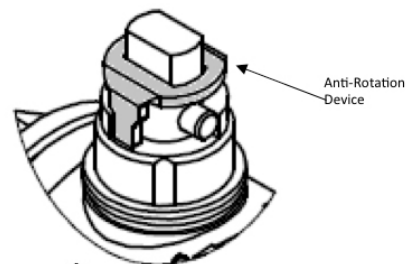


Model	L	L1	L2	L3	D	H	A	M	Weight
	[mm]	[mm]	[mm]	[mm]	[mm]	[mm]	[mm]	[mm]	[g]
CBVT 02H002	127	8	67	16	10	14	44,5	M4×0.7	190
CBVT 02H001	126	8	66,5	16	10	14	49	M4×0.7	176
CBVT 03H001	132	10	69,5	16	10	14	49	M4×0.7	180
CBVT 03H002	132	10	69	16	10	14	50,5	M4×0.7	183
CBVT 04H002	140	12	74	16	10	14	50,4	M4×0.7	190
CBVT 04H001	138	12	72,5	16	10	14	49	M4×0.7	188
CBVT 05H002	148	16	77	22	14	16	58,5	M4×0.7	279
CBVT 05H001	148	16	77	22	14	16	58,5	M4×0.7	290
CBVT 06H002	152	16	78	30	19	20	72	M4×0.7	470
CBVT 06H001	148	16	76	30	19	20	72	M4×0.7	510
CBVT 07H001	185	18	95,2	30	19	20	72	M4×0.7	525
CBVT 09H002	186	20	95	38	25	27	85,3	M4×0.7	748
CBVT 09H001	185	20	95	38	25	27	85,3	M4×0.7	750
CBVT 11H001	205	25	108	48	32	37	104	M6×1.0	1840
CBVT 13H001	260	28	134	55	38	43,5	118,5	M6×1.0	2710
CBVT 13H002	260	28	134	55	38	43,5	118,5	M6×1.0	2761



ACCESSORIES

The steel ring placed on the stem under the cover cap prevents the accidental rotation of the ball during the system operation



Anti-Rotation Device							
Model	Part Number*	Applicable for SBV models with:		Cap Nut	Dimensions mm		
		Inch connections:	Metric connections:		A	B	C
SK01	10150061902	1" 1/8 - 1" 3/8	28mm - 35mm	M18X1-6H	101	23	14
SK02	10150062002	1" 5/8	42mm	M22X1-6H	101	23	14
SK03	10150062102	2" 1/8 - 2" 5/8	54mm - 64mm	M22X1-6H	119	23	14
SK04	10150062202	3" 1/8 - 3" 5/8	80mm - 92mm	M26X1-6H	119	23	14
SK05	10150062302	4" 1/8 - 4" 1/4	105mm - 108mm	M32X1-6H	173	36	21

Note: 1) Steel Anti-Rotation ring and Brass Cover Cap are in the extent of delivery

* Available also as industrial package. Contact Sanhua for more details.

For complete product family information please visit us at
www.sanhuaeurope.com and download the full range of datasheet at TECHNICAL INFORMATION LINK.