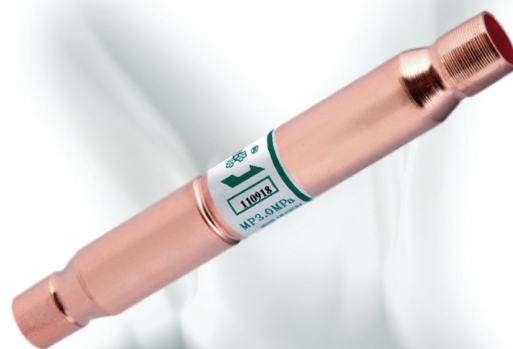


SANHUA *Float Type* SERIES



Check Valve

Float type check valve are used in air conditioning system in shunt connection with capillary tubes to control the forward and reverse flow of refrigerant and make refrigerant flow in a specified direction.



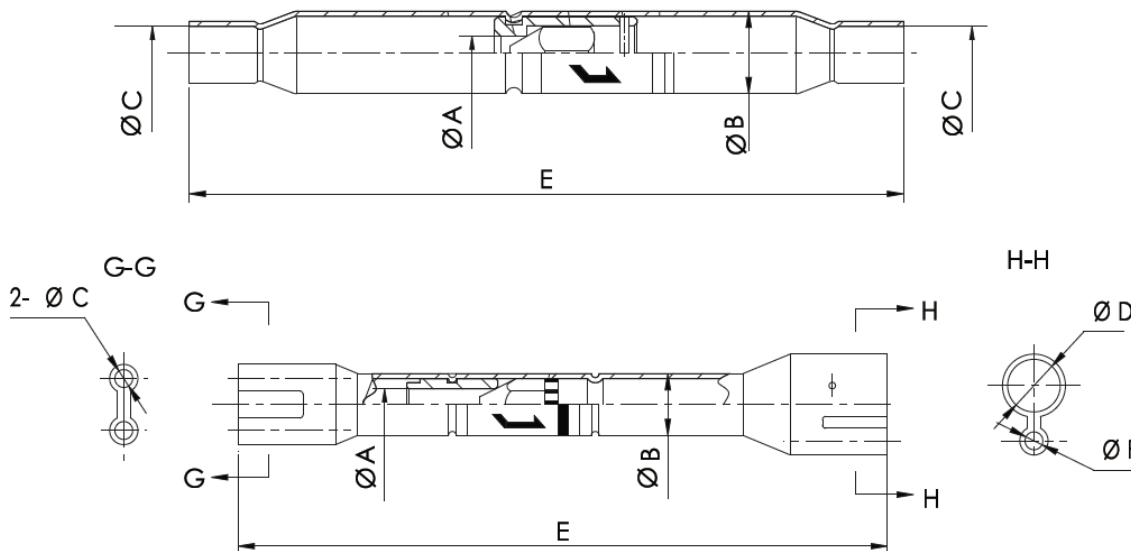
FEATURES

- GOOD SEALING PERFORMANCE, STABLE STRUCTURE: USING HIGH QUALITY ENGINEERING PLASTIC VALVE CORE
- SMALL FLOW RESISTANCE, BIG FLOW RATE

GENERAL SPECIFICATIONS

- Applicable refrigerant: R22, R407C, R410A etc.
- Applicable medium temperature: $-30^{\circ}\text{C} \sim +120^{\circ}\text{C}$
- Maximum working pressure: 4.2MPa

DIMENSIONS





SANHUA *Float Type SERIES* Check Valve

DIMENSIONS

Model	Dimensions mm				
	A	B	C	D/F	E
YCV3	3	9.52	3.18	3.18	100
			6.35	6.35	
YCV5	5	12.7	9.52	9.52	110
			12.7	12.7	
YCV8	8	19.05	12.7	12.7	150
			15.88	15.88	
YCV11	11	22.2	15.88	15.88	160
			19.05	19.05	
YCV14	14	28	19.05	19.05	160
			22.2	22.2	
CV/CAV	4.8	9.52	2.7	6.0/3.1	100
			2.9	6.5/2.7	
			3.1	6.5/2.9	
			3.3	8.1/2.7	
			3.5	8.1/3.3	