

SANHUA JYQ SERIES

Compensator



The Compensator is applicable for commercial air conditioner, freezing or deep-freezing equipment or other refrigeration circuits in order to open and to shut off inner flow path by operating the valve stem. It can also be used as service valve for vacuum pumping and refrigerant injection etc.



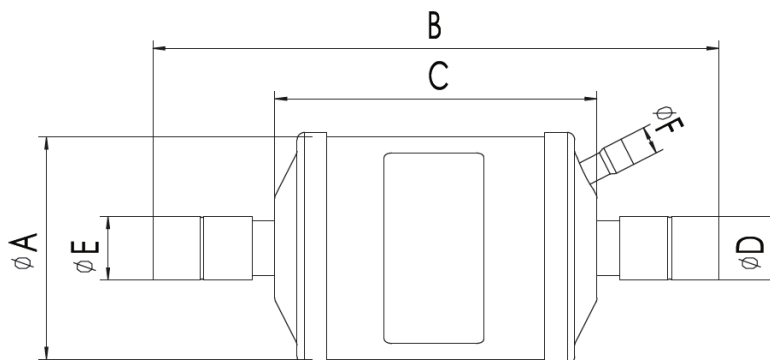
FEATURES

- SOLID COPPER SOLDER CONNECTION
- MINIMIZE PRESSURE DROP
- GUARANTEE THE MAXIMUM WORKING PRESSURE
- POWDER COATED SURFACE CAN SURVIVE 500 HOURS OF SALT SPRAY TEST
- EXCELLENT ANTI-SHOCK AND VIBRATION PERFORMANCE: USING STEEL CASING

GENERAL SPECIFICATIONS

- Applicable refrigerant: HFC, HCFC and HC
- Applicable medium temperature: $-30^{\circ}\text{C} \sim +120^{\circ}\text{C}$ ($-22^{\circ}\text{F} \sim +240^{\circ}\text{F}$)
- Applicable ambient temperature: $-30^{\circ}\text{C} \sim +55^{\circ}\text{C}$ ($-22^{\circ}\text{F} \sim +131^{\circ}\text{F}$)
- Maximum working pressure: 4.83MPa
- Certification: UL, CSA

DIMENSIONS TECHNICAL PARAMETERS





SANHUA JYQ SERIES Compensator

TECHNICAL PARAMETERS

Model	Dimensions						Connection Type
	A mm	B mm	C mm	D in	E in	F in	
JYQ-A23070-001	89	182,6	84,6	7/8	7/8	3/8	Solder Connection
JYQ-A31070-001	89	206,7	108,7	7/8	7/8	3/8	
JYQ-A36070-001	89	226,5	128,5	7/8	7/8	3/8	
JYQ-A45070-001	89	258	160	7/8	7/8	3/8	
JYQ-A78070-001	89	358,4	260,4	7/8	7/8	3/8	