



CO₂ Check valve

BCV series of check valves are designed for installation in transcritical CO₂ refrigeration system and HPWH systems. They are used to ensure correct flow direction of refrigerant so as to prevent backflow.



FEATURES

- THIS VALVE ENSURE THE ONLY CORRECT FLOW DIRECTION
- STAINLESS STEEL VALVE BODY AND THICK BRASS CONNECTION TUBE - HIGH STRENGTH, CAN MEET THE 14MPa MOP REQUIREMENT
- FURNACE WELDING AND LASER WELDING PROCESS FOR HIGH WELDING QUALITY - ENSURE RELIABLE AIR TIGHTNESS IN HIGH PRESSURE SYSTEM

GENERAL SPECIFICATIONS

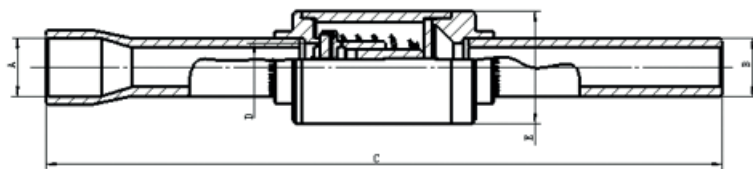
- Applicable for R744 (CO₂)
- Medium temperature TS min./max.: -50°C /140°C
- Max. operating pressure PS: 14MPa (140bar)
- Installation position:
 - Flow direction corresponds to the arrow





SANHUA BCV SERIES CO2 Check valve

GENERAL CHARACTERISTICS



| Model | Part number | Type | Connections | | Kv [m ³ /h] | Min.OPD [kPa] | Dimensions | | |
|-----------|-------------|--------------|-------------|-----------|---------------------------|------------------|------------|-------|------|
| | | | ØA ODF | ØB ODM | | | D | C | E |
| | | | [in] | [in] | | | [mm] | [mm] | [kg] |
| BCV08-001 | 10160046702 | Straight-way | 3/8 | 3/8 | 0.9 | 40 | 8 | 110.6 | 18.5 |